

固態繼電器 SOLID STATE RELAY

KR4010AX KR4050AX
KR4015AX KR4075AX
KR4025AX KR4090AX
KR4040AX

KR40 (VR-AC) SERIES



型號索引說明 Model No. Descriptions:

KR 40 10 AX

These two letters indicate SSR's series:
KR : VR to AC TYPE

This letters indicate:
"A" = AC output,

負載電壓
 THE OUTPUT VOLTAGE:
40 = 48-480VAC

負載電流
 THE OUTPUT CURRENT:
10=10A, 15=15A, 25=25A
40=40A, 50=50A, 75=75A
90=90A

產品摘錄 PRODUCT SELECTON

輸出規格 OUTPUT SPECIFICATIONS

品名	Description	KR4010AX	KR4015AX	KR4025AX	KR4040AX	KR4050AX	KR4075AX	KR4090AX
負載電壓範圍	Operating Voltage [VAC]	48-480VAC	48-480VAC	48-480VAC	48-480VAC	48-480VAC	48-480VAC	48-480VAC
最大負載電流	Maximum Load Current [Adc]	10A	15A	25A	40A	50A	75A	90A
破壞電壓	Maximum Transient Overvoltage [Vpk]	1200	600	600	600	1200	1200	1200
洩漏電流	Maximum Off-State Leakage Current @Rated Voltage [mA]	Less 3mA	Less 3mA	Less 3mA	Less 3mA	Less 3mA	Less 3mA	Less 3mA
最大瞬間承受電流	Maximum Surge Current [Adc] (10ms)	100A	150A	250A	400A	500A	750A	900A
動作壓降	Maximum On-State Voltage Drop @ Rated Current [VACrms]	1.5	1.5	1.5	1.5	1.5	1.5	1.5
瞬間電壓變化率	Maximum Off-State dv/dt [V/uSEC]	1000	1000	1000	1000	1000	1000	1000

輸入規格 INPUT SPECIFICATIONS

品名	Description	KR4010AX	KR4015AX	KR4025AX	KR4040AX	KR4050AX	KR4075AX	KR4090AX
控制電壓範圍	Control Voltage Range	VR1MQ	VR1MQ	VR1MQ	VR0-1MQ	VR0-1MQ	VR0-1MQ	VR0-1MQ
最小導通電壓	Minimum Turn-on Voltage	3.0	3.0	3.0	3.0	3.0	3.0	3.0
最大關斷電壓	Maximum Turn-off Voltage	1.0	1.0	1.0	1.0	1.0	1.0	1.0
輸入電流	Typical Input Current	15mA	15mA	15mA	15mA	15mA	15mA	15mA
最大動作時間	Maximum Turn-on Time [mSec]	8.3m Sec	8.3m Sec	8.3m Sec	8.3m Sec	8.3m Sec	8.3m Sec	8.3m Sec
最大關斷時間	Maximum Turn-off Time [mSec]	Less 1/2AC cycle	Less 1/2AC cycle	Less 1/2AC cycle	Less 1/2AC cycle	Less 1/2AC cycle	Less 1/2AC cycle	Less 1/2AC cycle

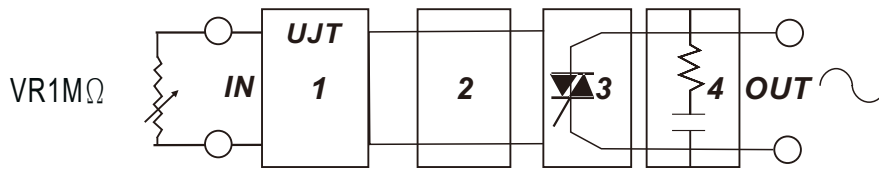
一般規格 GENERAL SPECIFICATIONS

品名	Description	KR4010AX	KR4015AX	KR4025AX	KR4040AX	KR4050AX	KR4075AX	KR4090AX
輸入/輸出至外殼絕緣電壓	Dielectric Strength, Input-Output Base (50/60Hz)	2500	2500	2500	2500	2500	2500	2500
輸入/輸出絕緣電壓	Dielectric Strength, Input-Output (50/60Hz)	2500	2500	2500	2500	2500	2500	2500
絕緣電阻	Minimum Insulation Resistance	10 ⁹ ohm	10 ⁹ ohm	10 ⁹ ohm	10 ⁹ ohm	10 ⁹ ohm	10 ⁹ ohm	10 ⁹ ohm
輸入-輸出容抗	Maximum Capacitance, Input-Output	Less 15pf	Less 15pf	Less 15pf	Less 15pf	Less 15pf	Less 15pf	Less 15pf
工作溫度範圍	Ambient Operating Temperature Range	-20°C~+80°C	-20°C~+80°C	-20°C~+80°C	-20°C~+80°C	-20°C~+80°C	-20°C~+80°C	-20°C~+80°C
儲存溫度範圍	Ambient Storage Temperature Range	-40°C~+100°C	-40°C~+100°C	-40°C~+100°C	-40°C~+100°C	-40°C~+100°C	-40°C~+100°C	-40°C~+100°C
觸發方式	Switching Type	Phase Control	Phase Control	Phase Control	Phase Control	Phase Control	Phase Control	Phase Control
重量	Weight (g)	100g	100g	100g	100g	100g	100g	100g

GENERAL NOTES

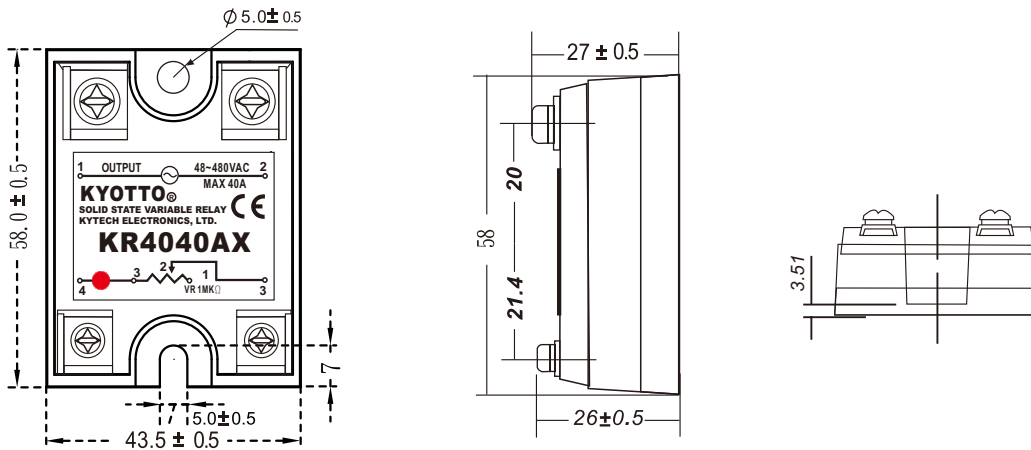
- (1) All parameters at 25°C unless otherwise specified
- (2) Dielectric strength and insulation resistance are measured between input and output
- (3) Heat sinking require, for derating curves see next page.

等效電路圖 EQUIVALENT CIRCUIT

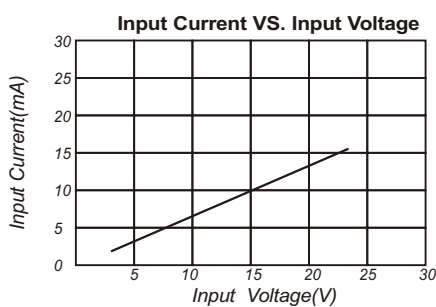


- 1.INPUT CIRCUIT
- 2.UJT
- 3.OUTPUT CIRCUIT
- 4.PROTECTED CIRCUIT

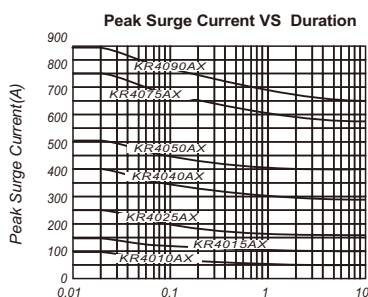
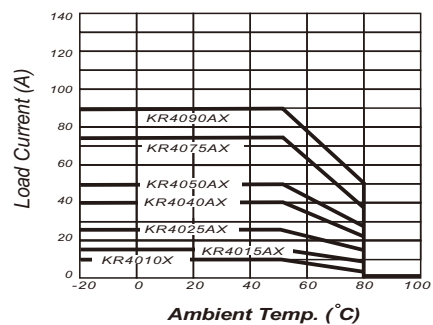
外觀尺寸圖 MECHANICAL DIMENSIONS (Unit:mm)



特性曲線圖 CHARACTERISTIC CURVES



Load Current VS. Ambient Temp.



Input Characteristics VS. Ambient Temperature

